



UPH/EC

MOBILE AIR PURIFICATION UNITS

- PLUG & PLAY SYSTEM WITH AUTOMATIC CONTROL
- UVC GERMICIDAL CHAMBER
- 3 STAGES OF FILTRATION
- IDEAL FOR ANY BUSINESS
- LOW ENERGY MOTOR WITH E.C. TECHNOLOGY
- 25 MM THICK ACOUSTIC CASING



FILTRATION STAGES



Get In Touch

Call: 0845 6880112
Email: info@adremit.co.uk

Our Address

Puravent, Adremit Limited, Unit 5a, Commercial Yard, Settle, North Yorkshire, BD24 9RH



UPH/EC

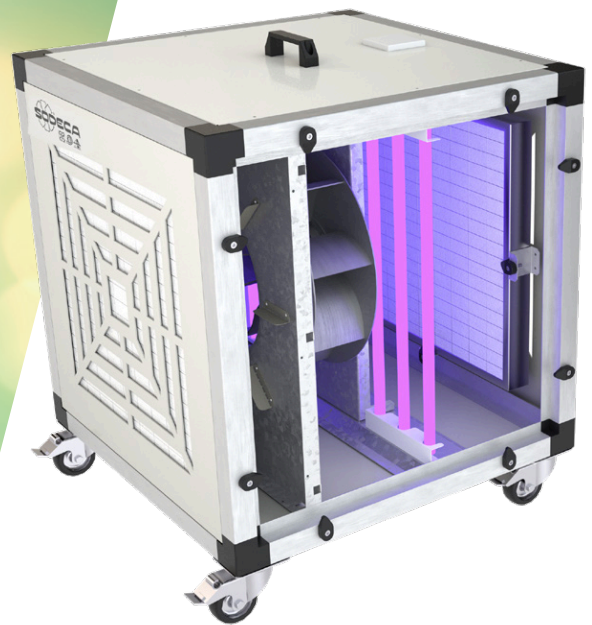
UPH/EC air purification units are designed for cleaning and purifying air and eliminating odours **in high occupancy areas where low noise and versatility are important.**



ENERGY SAVING

The guide vanes at the air intake prevent air turbulence, which together with a dynamic pressure balance chamber, optimise the unit's efficiency.

The high performance E.C. technology electric motor is a key element in reducing power consumption, and can be easily controlled using any 0-10 V sensor.



LOW NOISE LEVEL

The 25mm thick acoustic casing reduces noise through the use of high-quality insulating materials designed for these applications, making it the perfect fan to use in areas that require low noise levels.



DURABILITY


The panels of these units are made of prefinished sheet steel and the structural frames are made of aluminium, which increases the life of the fan and allows them to be installed in high corrosion areas. We recommend that the units are located under cover to prevent water ingress.



EASY TO INSTALL AND MAINTAIN

The inspection cover is used for quick access for cleaning the impeller and replacing the filters.

Get In Touch

 Call: [0845 6880112](tel:08456880112)
 Email: info@adremit.co.uk

Our Address

Puravent, Adremit Limited, Unit 5a, Commercial Yard,
Settle, North Yorkshire, BD24 9RH

F

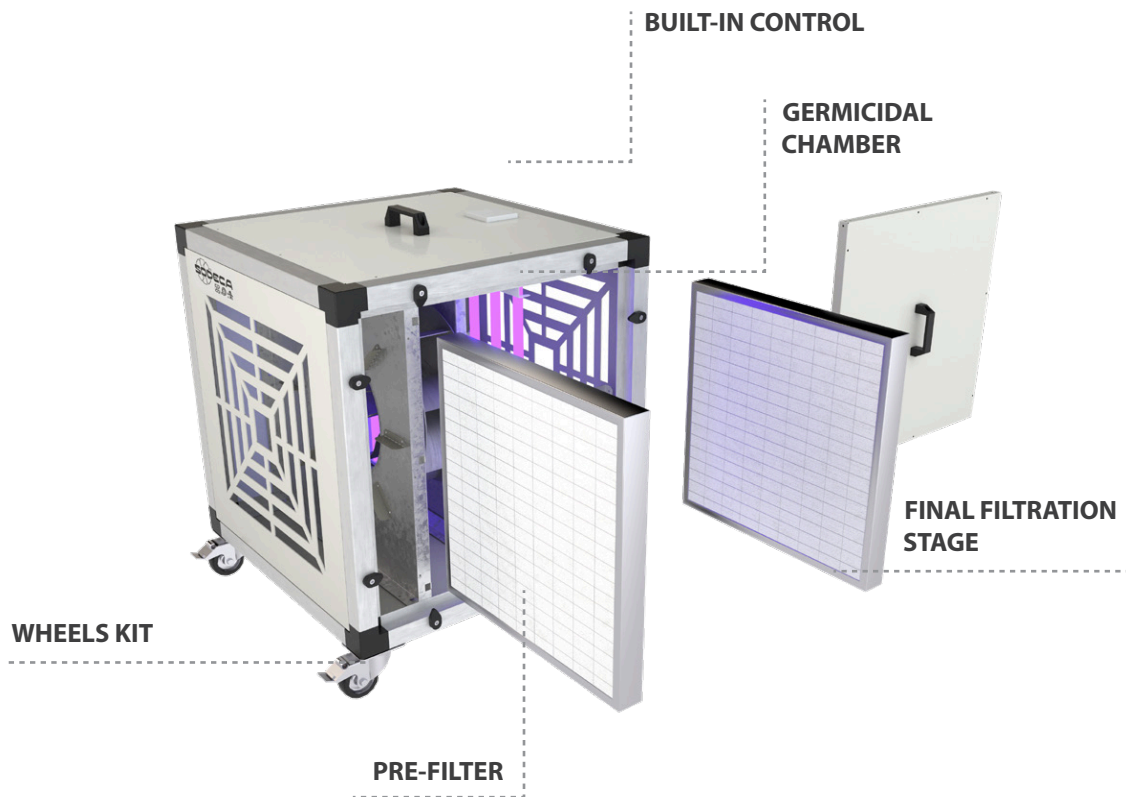
FILTRATION STAGES

Depending on the model, the units incorporate two filtration stages, F7 + F9 or F7 + HEPA H14, as well as an activated carbon filter for eliminating odours. These provide the unit with excellent filtration properties.

⏻

BUILT-IN CONTROL SYSTEM

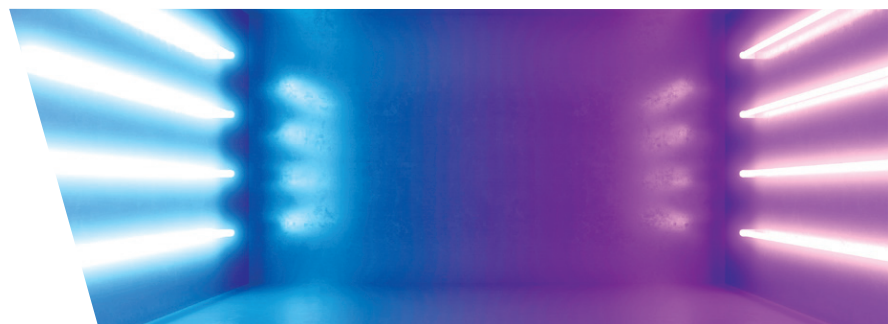
- Fan ON/OFF
- Adjustable flow 0%-100%
- Germicidal chamber ON/OFF
- Time control
- Dirty filter monitoring and alarm
- Automatic operation



CG

GERMICIDAL CHAMBER

Depending on the model, these purification units can incorporate a germicidal chamber that utilises UVC ultraviolet lamps.



Get In Touch

Call: 0845 6880112
 Email: info@adremit.co.uk

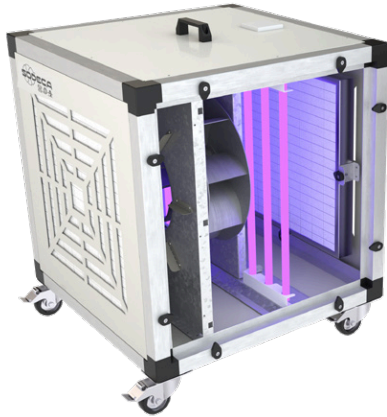
Our Address

Puravent, Adremit Limited, Unit 5a, Commercial Yard, Settle, North Yorkshire, BD24 9RH

UPH/EC



Mobile air purification units with E.C. Technology motors and a 25mm thick acoustically insulated casing to reduce noise.



Characteristics:

- 40mm aluminium profile structure.
- Wheels kit
- Plug & Play system with built-in control.
- Cases with a high quality, 25mm thick acoustic panels made of prefinished sheet.
- Impeller with backward curved blades.
- Filtration stages depending on the model:
 - F7 + F9
 - F7 + HEPA H14
- Activated carbon filter for eliminating odours.
- Dirty filter monitoring and alarm. Germicidal chamber with UVc ultraviolet lamps (256 nm), depending on the model.
- Inspection cover for maintenance and filter replacement.
- Air inlet diffuser to increase fan efficiency.

Motor:

- High efficiency E.C. technology, external rotor motors, controlled by 0-10 V signal.
- Single-phase 200/240V - 50/60 Hz and three-phase 380/480V - 50/60 Hz.
- Temperature range of carried air -25 °C to +60 °C.

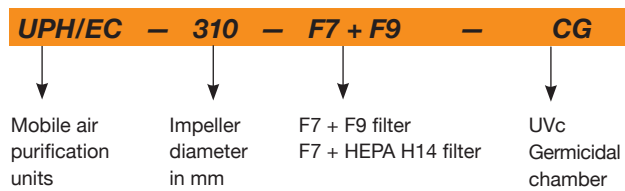
Finish:

- Aluminium frame and prefinished sheet steel panels with 25mm thick thermal and acoustic insulation.

On request:

- Particle sensor for automatic monitoring.

Order code



Characteristics of the filters

| Filters | EN 779 Em | EN 1822 | ISO 16890 | | | |
|----------|--------------|----------|----------------------|------------------------|-----------------------|------------|
| | | | ISO ePM ₁ | ISO ePM _{2.5} | ISO ePM ₁₀ | ISO COARSE |
| F7 | 90% | - | >50% | >65-95% | >85% | - |
| F9 | 95% | - | >80% | >95% | >95% | - |
| HEPA H14 | - | >99.995% | - | - | - | - |

Technical characteristics

| Model | Recommended working surface ¹ (m ²) | | Speed (r/min) | Power (W) | Power supply | Sound pressure level at 50% of max. speed ² dB(A) | Maximum flow rate (m ³ /h) | | Weight (kg) |
|------------|--|--------------------|---------------|-----------|-------------------------|--|---------------------------------------|--------------------|-------------|
| | Filters (F7 + F9) | Filters (F7 + H14) | | | | | Filters (F7 + F9) | Filters (F7 + H14) | |
| UPH/EC-220 | 85 | - | 3265 | 176 | 200-240 V 50/60 Hz 1 Ph | 36 | 850 | - | 32 |
| UPH/EC-250 | 120 | - | 2850 | 180 | 200-240 V 50/60 Hz 1 Ph | 38 | 1225 | - | 33 |
| UPH/EC-310 | 140 | 90 | 1920 | 175 | 200-240 V 50/60 Hz 1 Ph | 29 | 1450 | 900 | 34 |
| UPH/EC-400 | 220 | 130 | 1550 | 460 | 200-240 V 50/60 Hz 1 Ph | 38 | 2200 | 1300 | 68 |

¹Recommended surface for a space 3 metres high. ²Irradiated sound pressure level in dB(A) at a distance of 1.5 m and at maximum flow rate.

Get In Touch

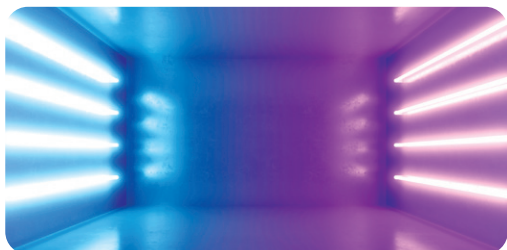
Call: 0845 6880112
Email: info@adremit.co.uk

Our Address

Puravent, Adremit Limited, Unit 5a, Commercial Yard, Settle, North Yorkshire, BD24 9RH

Technical characteristics of the UVc germicidal chamber

Depending on the model, these purification units can incorporate a germicidal chamber that utilises UVc ultraviolet lamps at 256nm wave length, which is the optimum amplitude for deactivating most micro-organisms by absorbing short wavelength energy through the DNA and RNA. Refer to the specific document for a list of the types of viruses or bacteria that are affected by the dose of radiation emitted inside the germicidal chamber.



| Model | Number of lamps | Total electric power (W) | Total radiation power UVc (W) | Radiation dose* (mJ/cm ²) |
|------------|-----------------|--------------------------|-------------------------------|---------------------------------------|
| UPH/EC-220 | 6 | 66 | 16.8 | 6.0 |
| UPH/EC-250 | 6 | 66 | 16.8 | 5.8 |
| UPH/EC-310 | 6 | 66 | 16.8 | 5.9 |
| UPH/EC-400 | 4 | 100 | 28 | 5.6 |

*Minimum dose calculated based on the flow using F7 + HEPA H14 filters



Erp. (Energy Related Products)

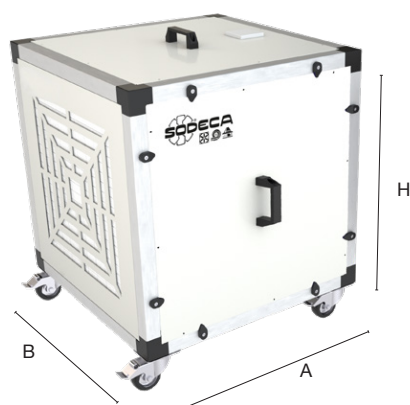
Information on Directive 2009/125/EC can be downloaded from the SODECA website or the QuickFan selector programme.

Acoustic characteristics

Sound power level Lw(A) in dB(A) per frequency band in Hz.
Irradiated values at maximum speed and medium flow rate.

| Model | 63 | 125 | 250 | 500 | 1000 | 2000 | 4000 | 8000 |
|------------|----|-----|-----|-----|------|------|------|------|
| UPH/EC-220 | 50 | 50 | 43 | 50 | 44 | 42 | 45 | 45 |
| UPH/EC-250 | 46 | 44 | 43 | 45 | 55 | 35 | 34 | 30 |
| UPH/EC-310 | 30 | 44 | 33 | 32 | 44 | 25 | 24 | 19 |
| UPH/EC-400 | 37 | 52 | 41 | 42 | 34 | 29 | 27 | 27 |

Dimensions mm



| Model | A (mm) | B (mm) | H (mm) |
|------------|--------|--------|--------|
| UPH/EC-220 | 500 | 542 | 642 |
| UPH/EC-250 | 500 | 542 | 642 |
| UPH/EC-310 | 500 | 542 | 642 |
| UPH/EC-400 | 700 | 742 | 842 |

*Data subject to change without prior warning

Get In Touch

Call: 0845 6880112
Email: info@adremit.co.uk

Our Address

Puravent, Adremit Limited, Unit 5a, Commercial Yard, Settle, North Yorkshire, BD24 9RH

**HEADQUARTERS****Sodeca, S.L.U.**

Pol. Ind. La Barricona
Carrer del Metall, 2
E-17500 Ripoll
Girona, SPAIN
Tel. +34 93 852 91 11
Fax +34 93 852 90 42
General sales: comercial@sodeca.com
Export sales: ventilation@sodeca.com

PRODUCTION PLANT**Sodeca, S.L.U.**

Ctra. de Berga, km 0,7
E-08580 Sant Quirze de Besora
Barcelona, SPAIN
Tel. +34 93 852 91 11
Fax +34 93 852 90 42
General sales: comercial@sodeca.com
Export sales: ventilation@sodeca.com

**EUROPE****FINLAND****Sodeca Finland, Oy**

HUITTINEN
Sales and Warehouse
Mr. Kai Yli-Sipilä
Metsälinnankatu 26
FI-32700 Huittinen
Tel. + 358 400 320 125
orders.finland@sodeca.com

HELSINKI
Smoke Control Solutions
Mr. Antti Kontkanen
Viipulantie 9C
FI-00700 Helsinki
Tel. +358 400 237 434
akontkanen@sodeca.com

HYVINKÄÄ
Industrial Applications
Mr. Jaakko Tomperi
Niinistökatu 12
FI-05800 Hyvinkää
Tel. +358 451 651 333
jtomperi@sodeca.com

ITALIA**Marelli Ventilazione, S.R.L.**

SAN MARTINO B.A.
Viale del Lavoro, 28
37036 San Martino B.A.
(VR), ITALY
Tel. +39 045 87 80 140
vendite@sodeca.com

PORTUGAL**Sodeca Portugal, Unip. Lda.**

PORTO
Rua Veloso Salgado 1120/1138
4450-801 Leça de Palmeira
Tel. +351 229 991 100
geral@sodeca.pt

LISBOA
Pq. Emp. da Granja Pav. 29
2625-607 Vialonga
Tel. +351 219 748 491
geral@sodeca.pt

ALGARVE
Rua da Alegria S/N
8200-569 Ferreiras
Tel. +351 289 092 586
geral@sodeca.pt

UNITED KINGDOM**Sodeca Fans UK, Ltd.**

Mr. Mark Newcombe
Tamworth Enterprise Centre
Philip Dix House, Corporation
Street, Tamworth, B79 7DN
UNITED KINGDOM
Tel. +44 (0) 1827 216 109
sales@sodeca.co.uk

AMERICA**CHILE****Sodeca Ventiladores, SpA.**

Sra. Sofía Ormazábal
Santa Bernardita 12.005
(Esquina con Puerta Sur)
Bodegas 24 a 26,
San Bernardo, Santiago, CHILE
Tel. +56 22 840 5582
ventas.chile@sodeca.com

COLOMBIA**Sodeca Latam, S.A.S.**

Sra. Luisa Stella Prieto
Calle7 No. 13 A-44
Manzana 4 Lote1, Montaña
Mosquera, Cundinamarca
Bogotá, COLOMBIA
Tel. +57 1 756 4213
ventascolombia@sodeca.co

PERU**Sodeca Perú, S.A.C.**

Sr. Jose Luis Jiménez
C/ Mariscal Jose Luis de
Orbegoso 331. Urb. El pino,
15022, San Luis. Lima, PERÚ
Tel. +51 1 326 24 24
Cel. +51 994671594
comercial@sodeca.pe


RUSSIA**RUSSIA
Sodeca, L.L.C.**

Mr. Stanislav Alifanov
Severnoye Shosse, 10 room 201
Business Park Plaza Ramstars
140105 Ramenskoye,
Moscow region, RUSSIA
Tel. +7 495 955 90 50
alifanov@sodeca.com



www.sodeca.com

**Get In Touch**

 **Call:** 0845 6880112
 **Email:** info@adremit.co.uk

Our Address

Puravent, Adremit Limited, Unit 5a, Commercial Yard,
Settle, North Yorkshire, BD24 9RH